

Select different colors for the *dorsal* and *ventral* body cavities. Color the coding circles below and the corresponding cavities in part A of Figure 1.8. Complete the figure by labeling those body cavity subdivisions that have a leader line. Complete part B by labeling each of the abdominal regions indicated by a leader line.

- Dorsal body cavity
- Ventral body cavity

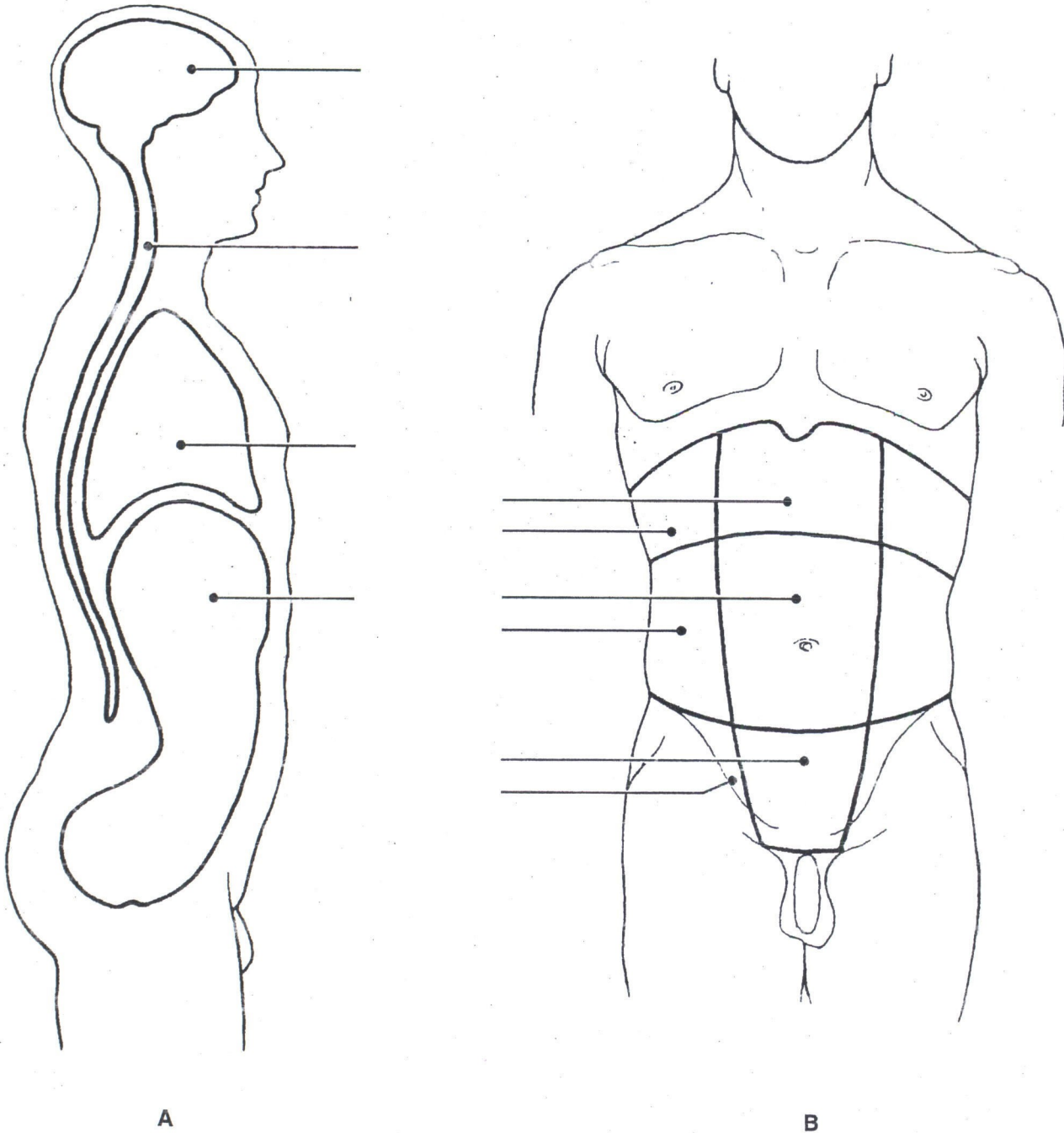


Figure 1.8

Choose different colors for the cavities listed with color coding circles. Color the coding circles and the corresponding cavities in Figure 1.9.

- Pleural cavities
- Pericardial cavity
- Abdominal cavity
- Pelvic cavity

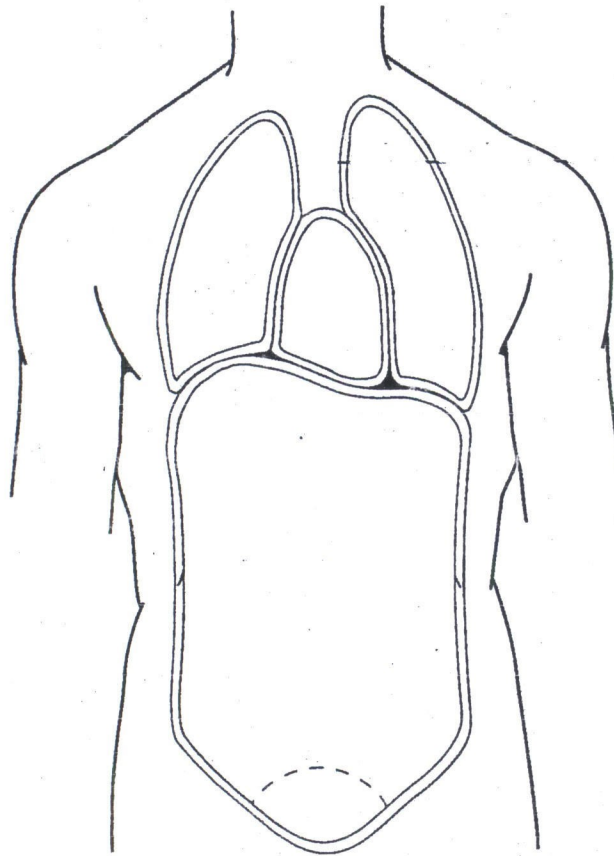


Figure 1.9

From the key choices, select the body cavities where the following surgical procedures would occur. Insert the correct answers in the answer blanks. Be precise; select the name of the cavity subdivision if appropriate.

KEY CHOICES

- | | | |
|---------------------|------------------|--------------------|
| A. Abdominal | C. Dorsal | E. Thoracic |
| B. Cranial | D. Pelvic | F. Ventral |

- _____ 1. Surgery to remove a cancerous prostate gland
- _____ 2. Coronary bypass surgery (heart surgery)
- _____ 3. Removal of a brain tumor
- _____ 4. Surgery to remove the distal part of the colon and establish a colostomy
- _____ 5. Gallbladder removal