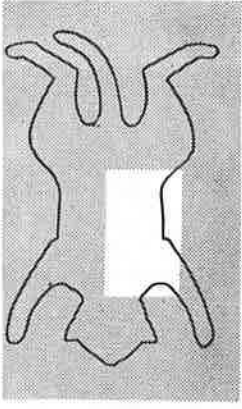


FIELD-TAYLOR

**an atlas of
cat anatomy**

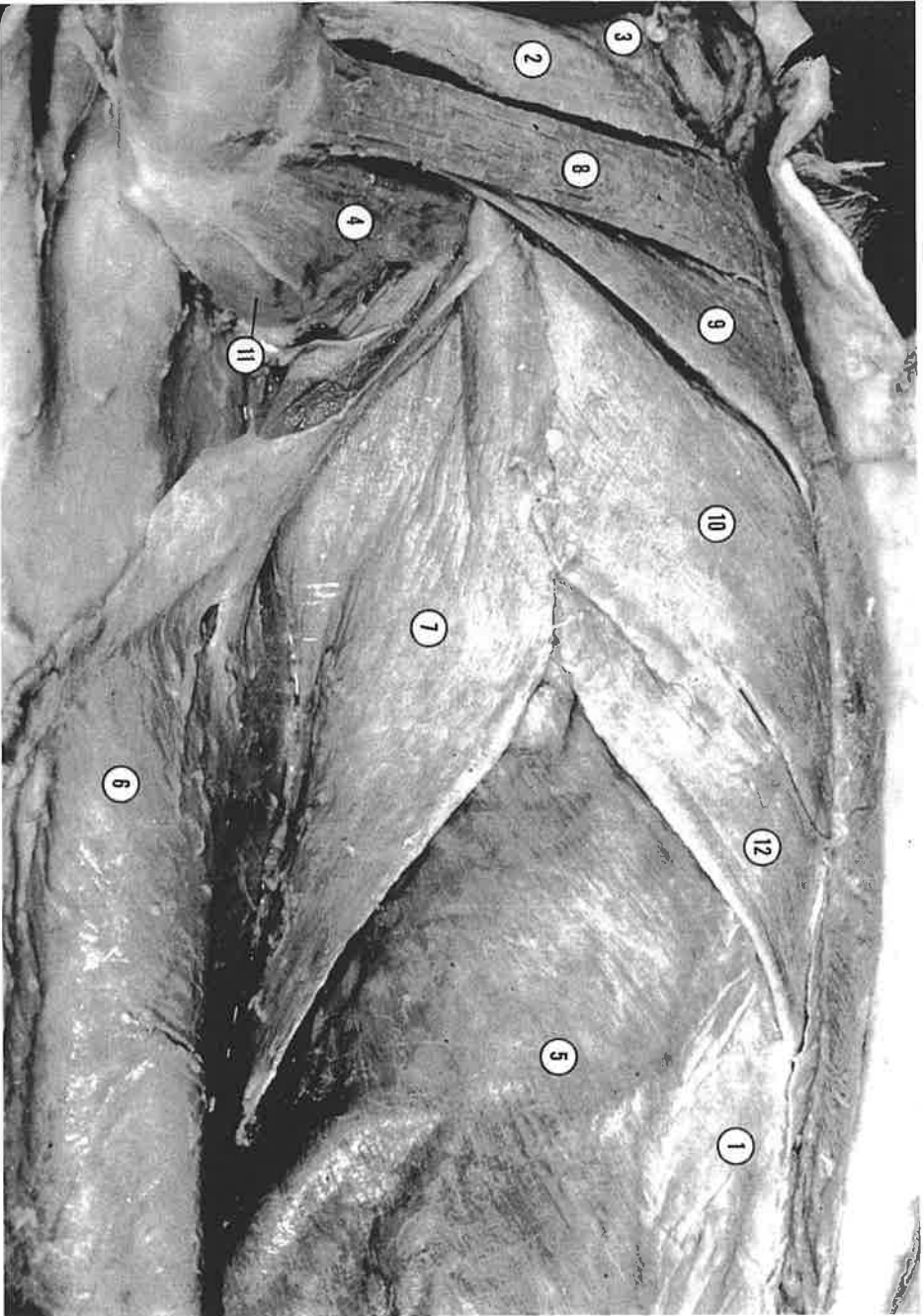
plate 16

SUPERFICIAL PECTORAL MUSCLES AND THE GREAT CUTANEOUS MUSCLE



- 1 clavobrachialis
- 2 clavotrapezius
- 3 epitrochlearis
- 4 **great cutaneous**
- 5 pectoantebrachialis
- 6 pectoralis major
- 7 pectoralis minor
- 8 posterior subscapular nerve
- 9 sternal region

SUPERFICIAL MUSCLES UNDERLYING THE GREAT CUTANEOUS MUSCLE



- 1 aponeurosis of the external abdominal oblique
- 2 clavobrachialis
- 3 clavotrapezius
- 4 epitrochlearis
- 5 external abdominal oblique
- 6 great cutaneous
- 7 latissimus dorsi
- 8 pectonibrachialis
- 9 pectoralis major
- 10 pectoralis minor
- 11 triceps brachii, long head
- 12 xiphohumeralis

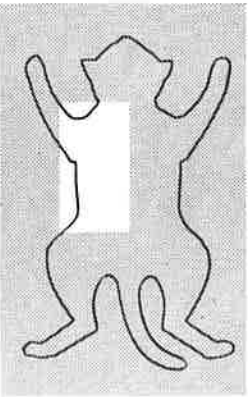
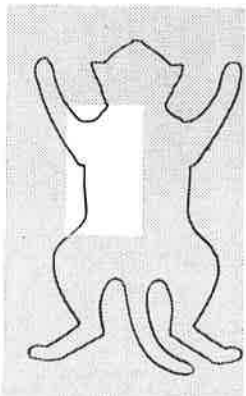
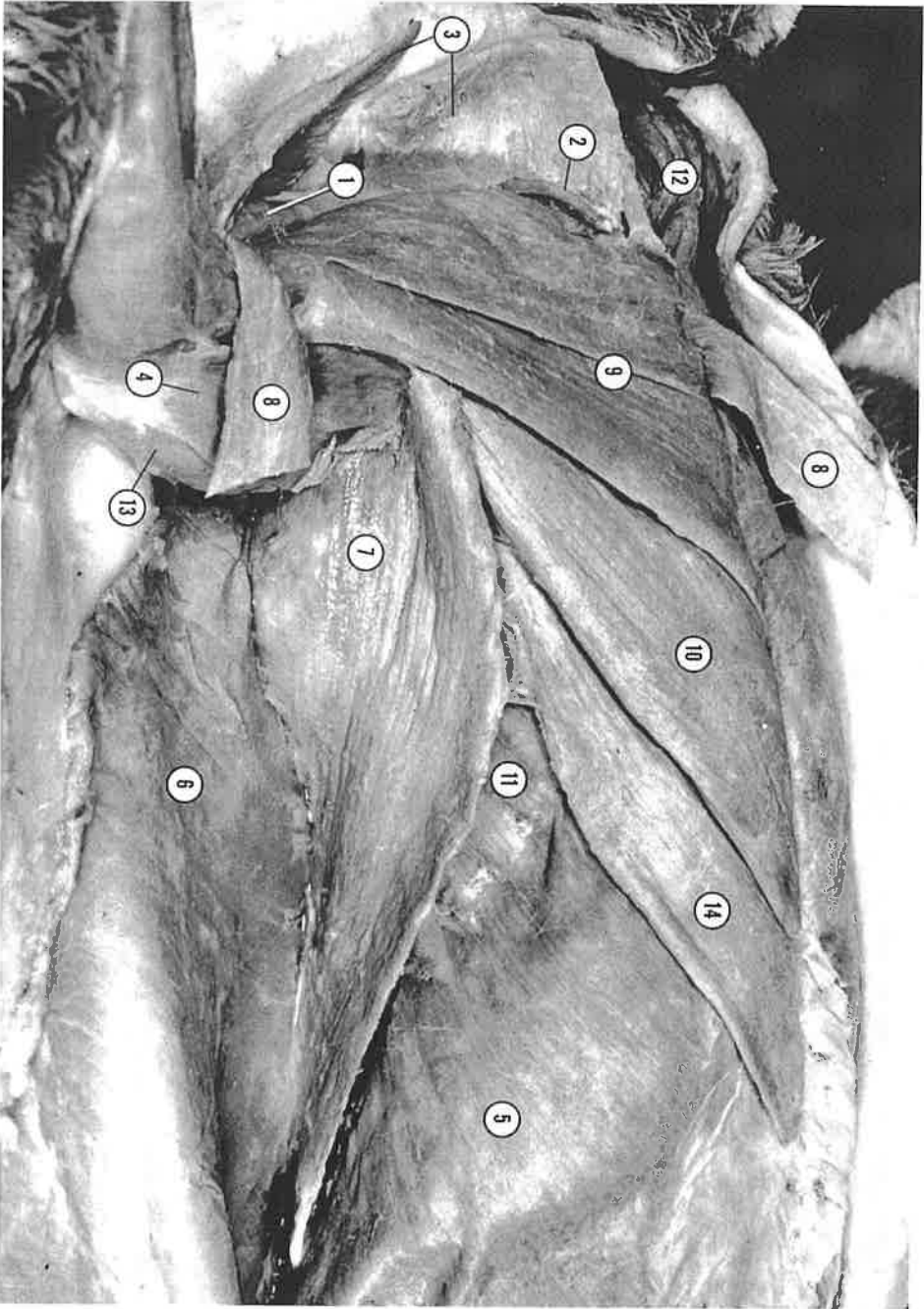


plate 18

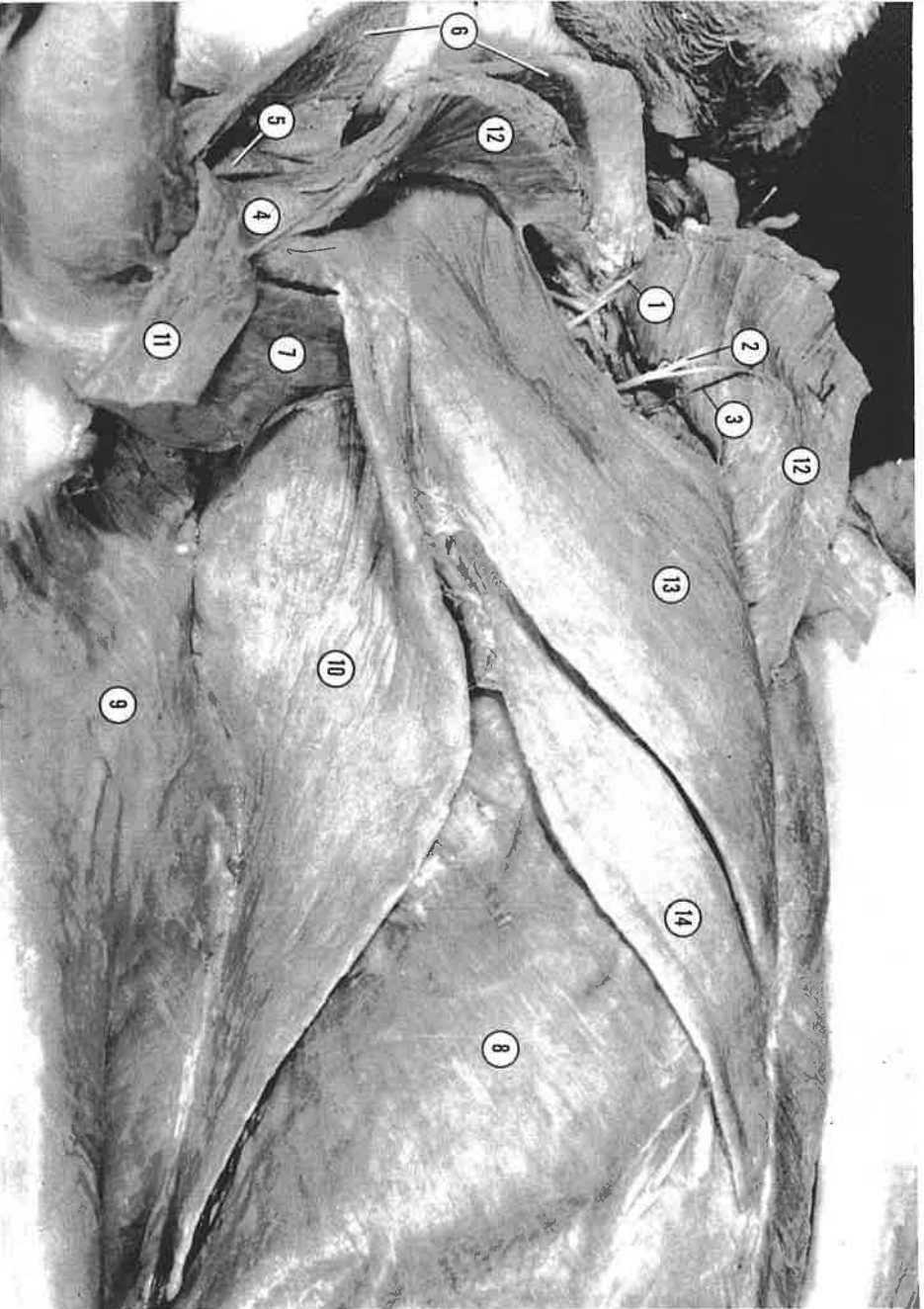
PECTORAL MUSCLES, SECOND LAYER



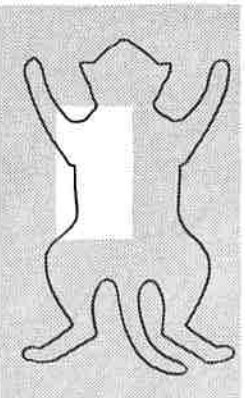
- 1 brachialis
- 2 clavicle
- 3 clavobrachialis, cut
- 4 epitrochlearis
- 5 external abdominal oblique
- 6 great cutaneous
- 7 latissimus dorsi
- 8 pectorantibrachialis, cut
- 9 pectoralis major
- 10 pectoralis minor
- 11 serratus ventralis
- 12 sternomastoid
- 13 triceps brachii, long head
- 14 xiphiummeralis

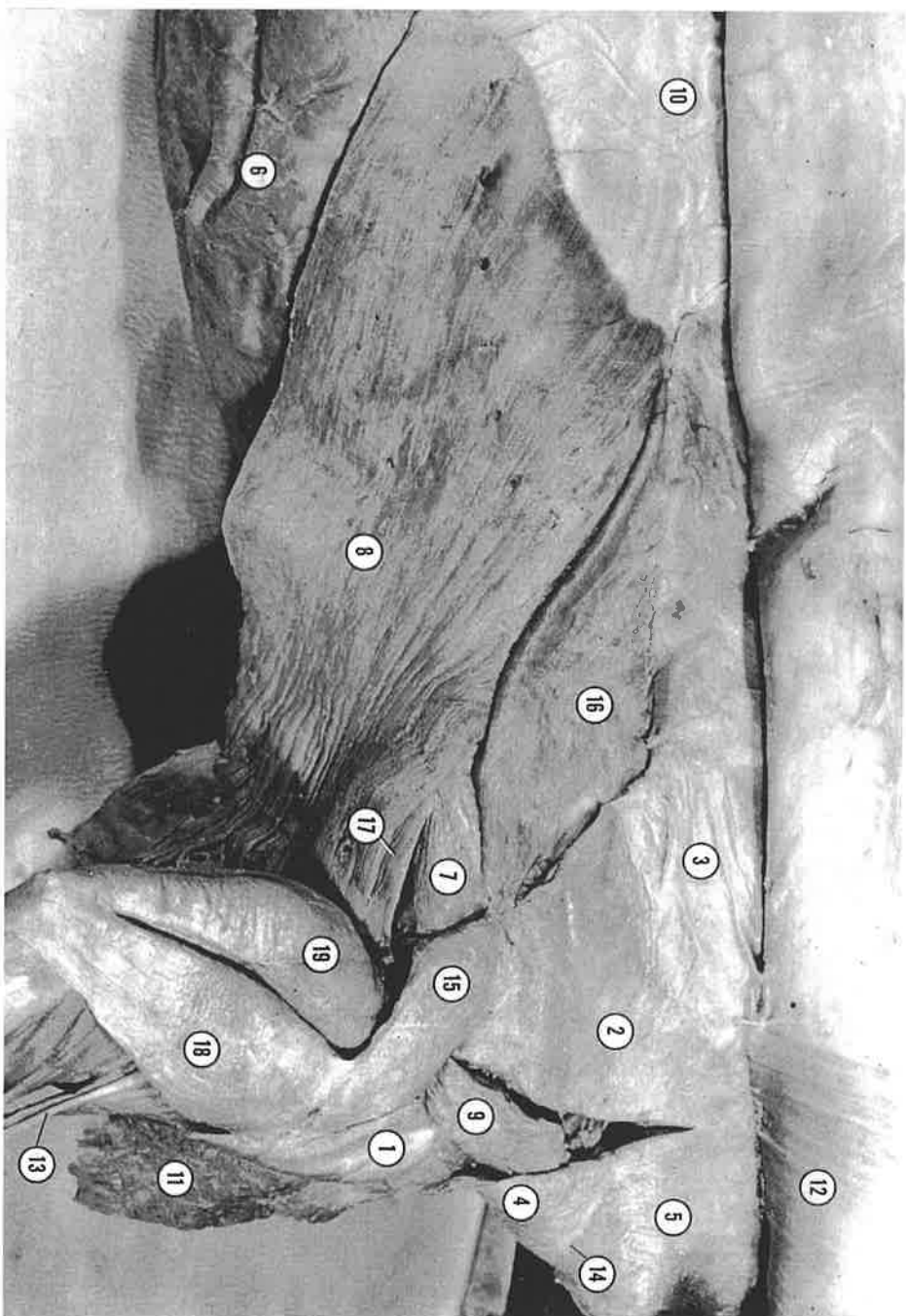
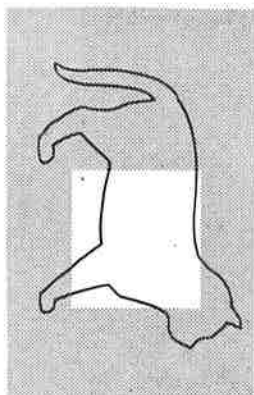
plate 19

PECTORALIS MINOR AND LATISSIMUS DORSI MUSCLES

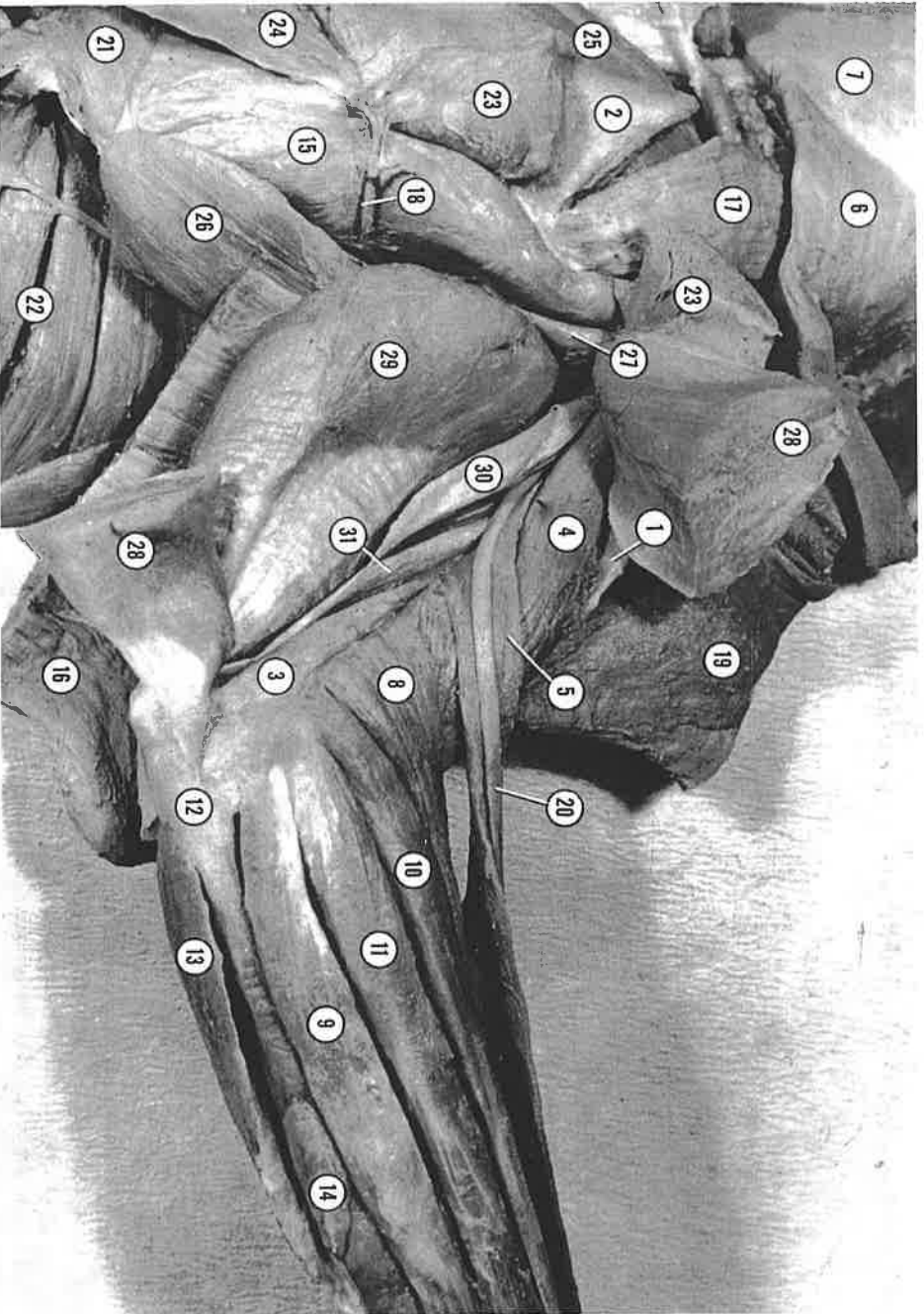


- 1 anterior thoracic artery
- 2 anterior thoracic nerve
- 3 anterior thoracic vein
- 4 **biceps brachii**
- 5 **brachialis**
- 6 clavobrachialis, cut
- 7 epitrochlearis
- 8 external abdominal oblique
- 9 great cutaneous
- 10 **latissimus dorsi**
- 11 pectoantebrachialis, cut
- 12 pectoralis major, cut
- 13 **pectoralis minor**
- 14 **xiphohumeralis**

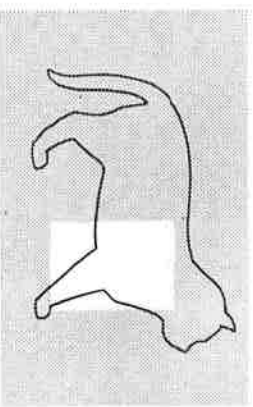




- 1 acromiodeltoideus
- 2 acromiotrapezius
- 3 aponeurosis between right and left acromiotrapezii
- 4 clavobrachialis
- 5 clavotrapezius
- 6 external abdominal oblique
- 7 infraapinatus
- 8 latissimus dorsi
- 9 levator scapulae ventralis
- 10 lumbar aponeurosis
- 11 pectoralis major, cut
- 12 platysma
- 13 radial nerve, superficial branch
- 14 raphe between clavobrachialis and clavotrapezius
- 15 spinodeltoideus
- 16 spinothrapezius
- 17 teres major
- 18 triceps brachii, lateral head
- 19 triceps brachii, long head

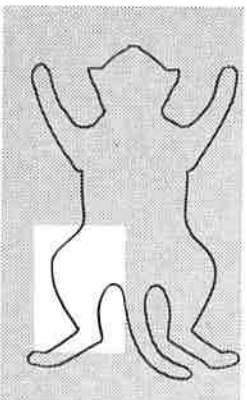


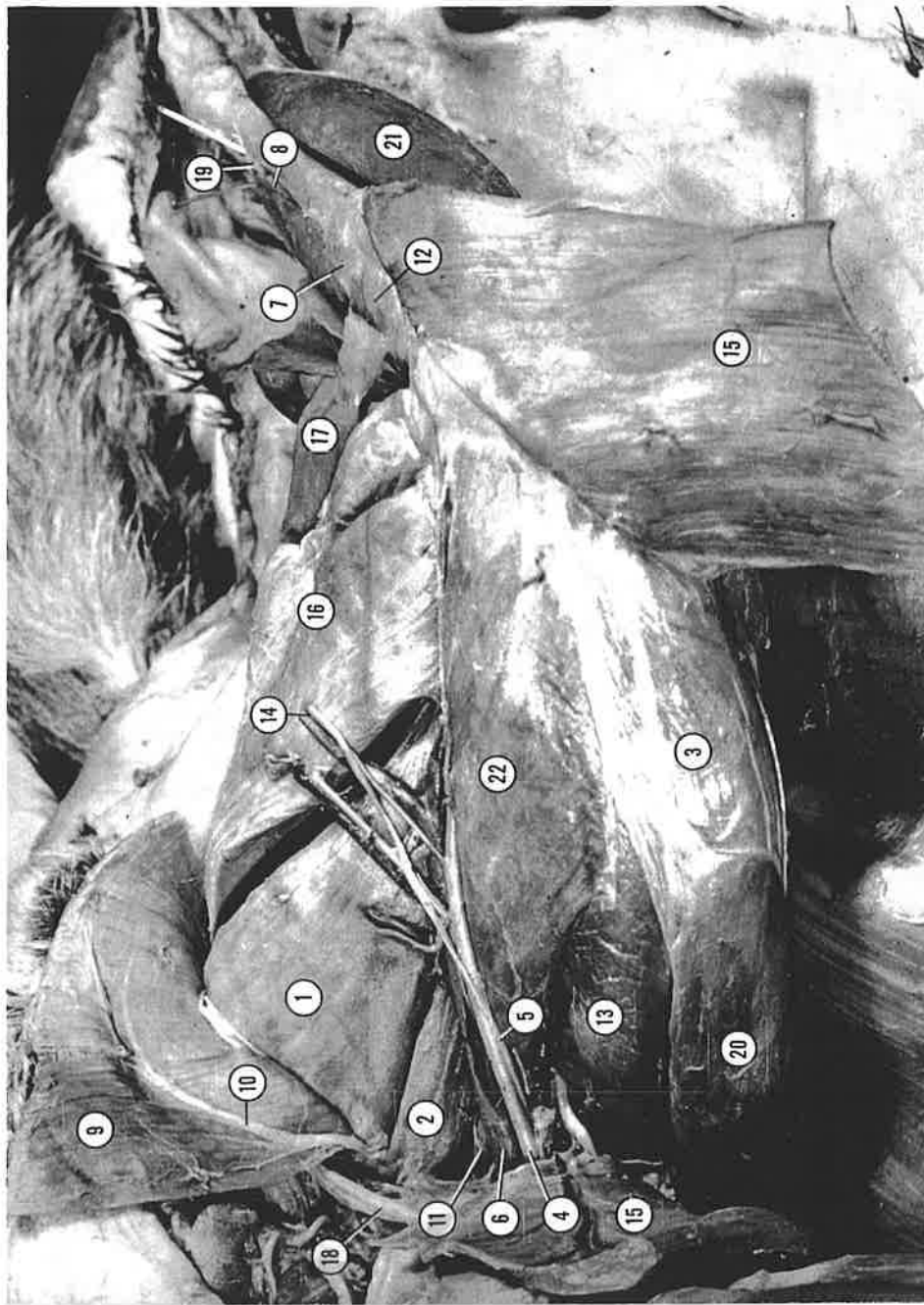
- 1 acromiodeltoideus
- 2 acromiotrachezius, cut
- 3 anconeus
- 4 brachialis
- 5 brachioradialis
- 6 clavobrachialis
- 7 clavotrapezius
- 8 extensor carpi radialis longus
- 9 extensor carpi ulnaris
- 10 extensor digitorum
- 11 extensor digitorum lateralis
- 12 extensor indicis proprius
- 13 flexor carpi ulnaris
- 14 flexor digitorum profundus, fifth head
- 15 infraspinatus
- 16 latissimus dorsi, cut
- 17 levator scapulae ventralis
- 18 middle subscapular nerve and artery
- 19 pectoralis major, cut
- 20 radial nerve, superficial branch
- 21 rhomboideus
- 22 serratus ventralis
- 23 spinodeltoideus, cut
- 24 spinotrapezius
- 25 supraspinatus
- 26 teres major
- 27 teres minor
- 28 triceps brachii, lateral head, cut
- 29 triceps brachii, long head
- 30 triceps brachii, medial head, long portion
- 31 tricone brachii, medial head, intermediate



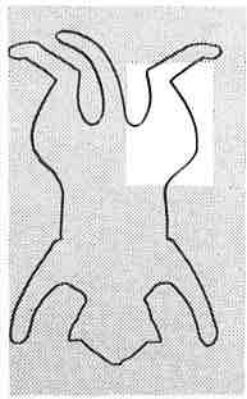


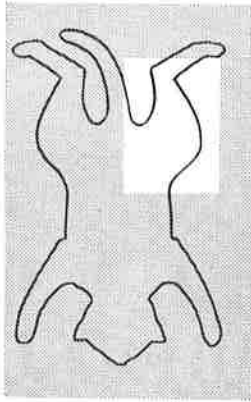
- 1 adductor femoris
- 2 **adductor longus**
- 3 aponeurosis of external abdominal oblique
- 4 femoral artery
- 5 femoral nerve
- 6 femoral vein
- 7 **gracilis**
- 8 patella
- 9 pectineus
- 10 saphenous artery
- 11 saphenous nerve
- 12 saphenous vein
- 13 **sartorius**
- 14 spermatic cord
- 15 tendon of tibialis anterior
- 16 tibialis anterior



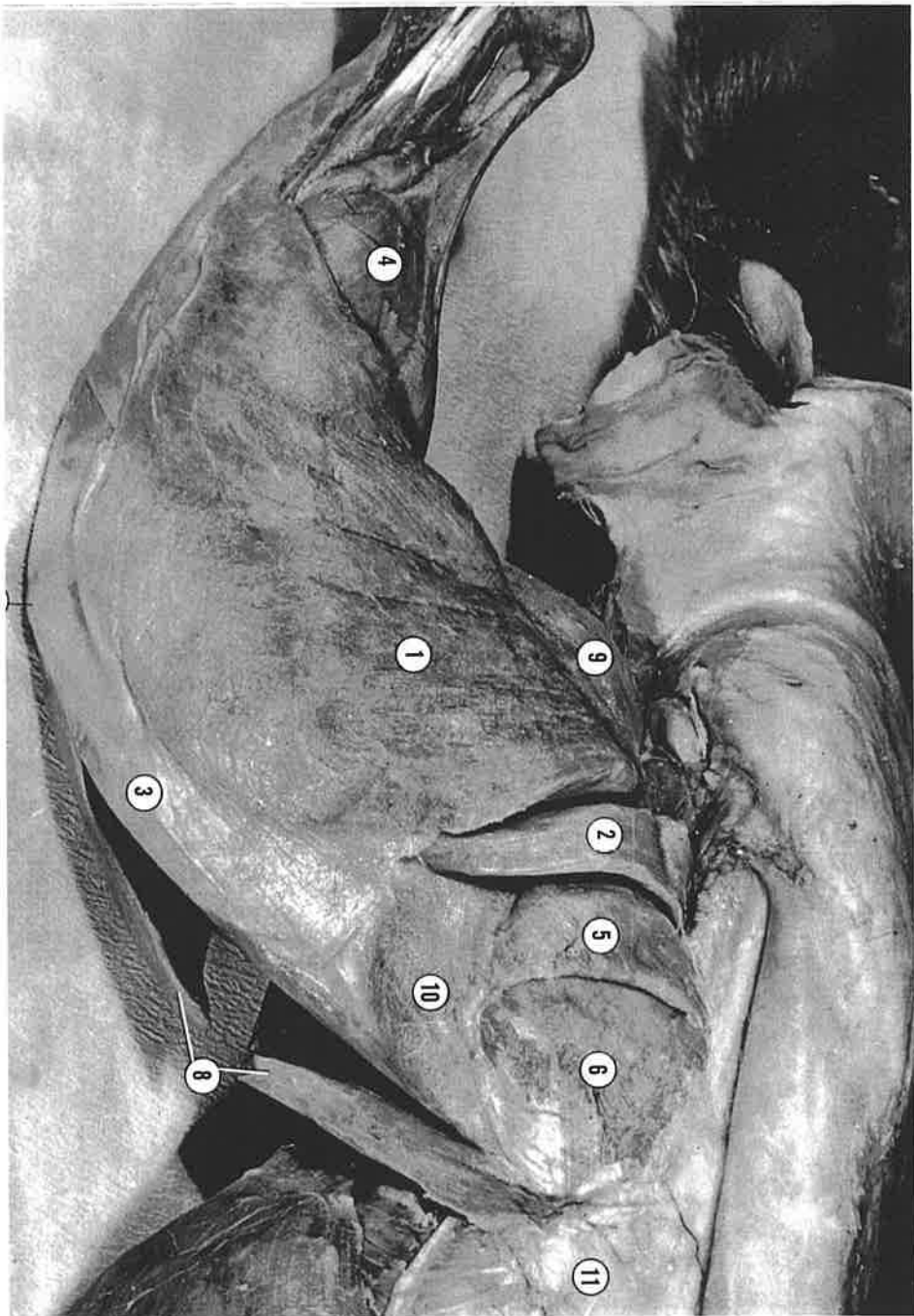


- 1 adductor femoris
- 2 adductor longus
- 3 fascia lata
- 4 femoral artery
- 5 femoral nerve
- 6 femoral vein
- 7 flexor digitorum longus
- 8 flexor hallucis longus
- 9 gracilis, cut
- 10 obturator nerve
- 11 pectineus
- 12 popliteus
- 13 rectus femoris of quadriceps femoris
- 14 saphenous artery, nerve, and vein, cut ends
- 15 sartorius, cut
- 16 semimembranosus
- 17 semitendinosus
- 18 spermatic cord
- 19 tendon of tibialis posterior
- 20 tensor fasciae latae
- 21 tibialis anterior
- 22 vastus medialis of quadriceps femoris



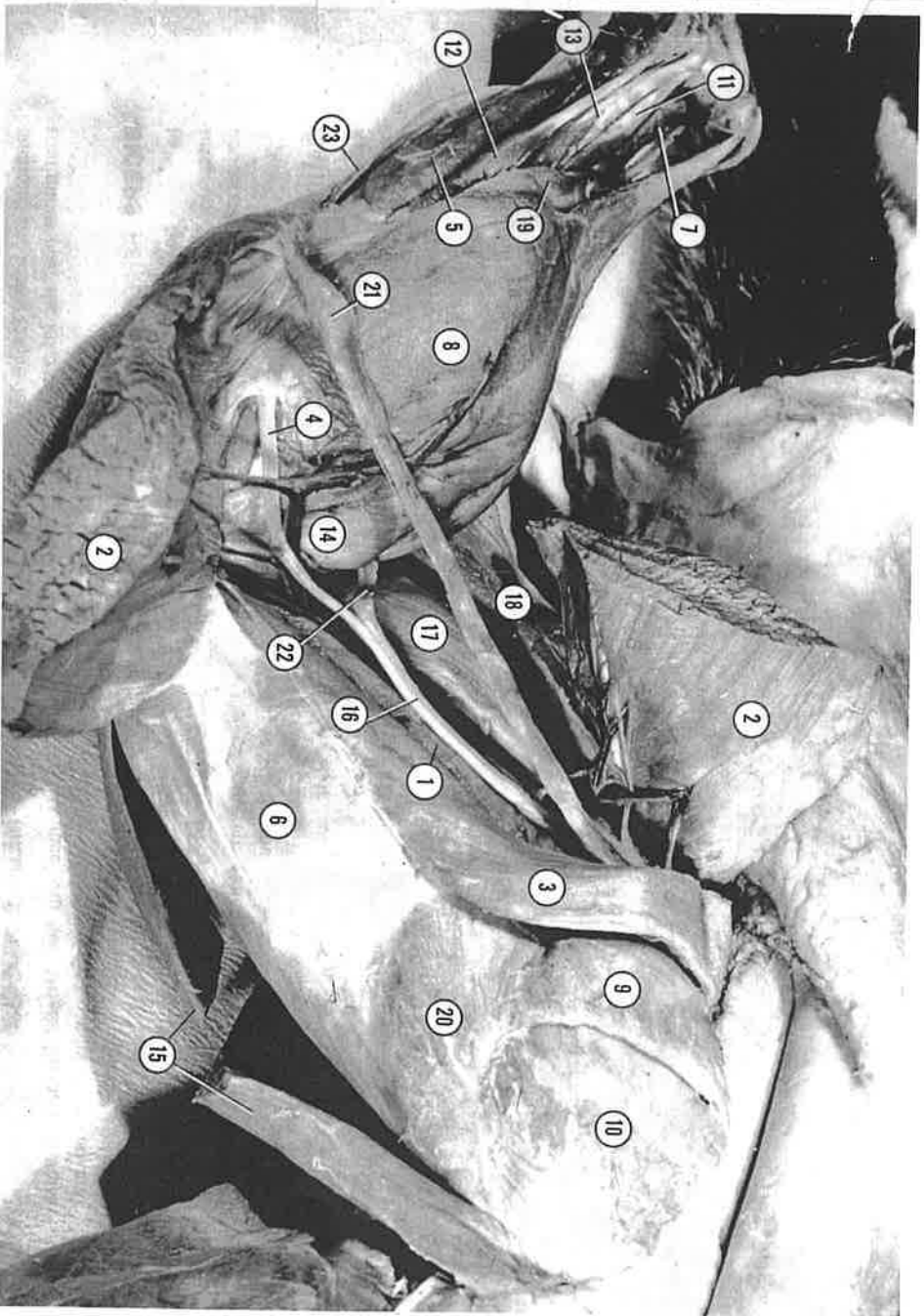


- 1 adductor femoris
- 2 adductor longus
- 3 gracilis, cut
- 4 lateral circumflex femoral artery and vein
- 5 rectus femoris of quadriceps femoris, cut
- 6 sartorius, cut
- 7 semimembranosus
- 8 semitendinosus
- 9 tensor fasciae latae
- 10 tibialis anterior
- 11 vastus intermedius of quadriceps femoris
- 12 vastus lateralis of quadriceps femoris
- 13 vastus medialis of quadriceps femoris



- 1 biceps femoris
- 2 caudofemoralis
- 3 fascia lata
- 4 gastrocnemius
- 5 gluteus maximus
- 6 gluteus medius
- 7 patella
- 8 sartorius, cut
- 9 semitendinosus
- 10 tensor fasciae latae
- 11 thoracolumbal fascia





- 1 adductor femoris
- 2 biceps femoris, cut
- 3 caudofemoralis
- 4 common peroneal nerve
- 5 extensor digitorum longus
- 6 fascia lata
- 7 flexor hallucis longus
- 8 gastrocnemius
- 9 gluteus maximus
- 10 gluteus medius
- 11 peroneus brevis
- 12 peroneus longus
- 13 peroneus tertius
- 14 plantaris
- 15 sartorius, cut
- 16 sciatic nerve
- 17 semimembranosus
- 18 semitendinosus
- 19 soleus
- 20 tensor fasciae latae
- 21 tenissimus
- 22 tibial nerve
- 23 tibialis anterior

